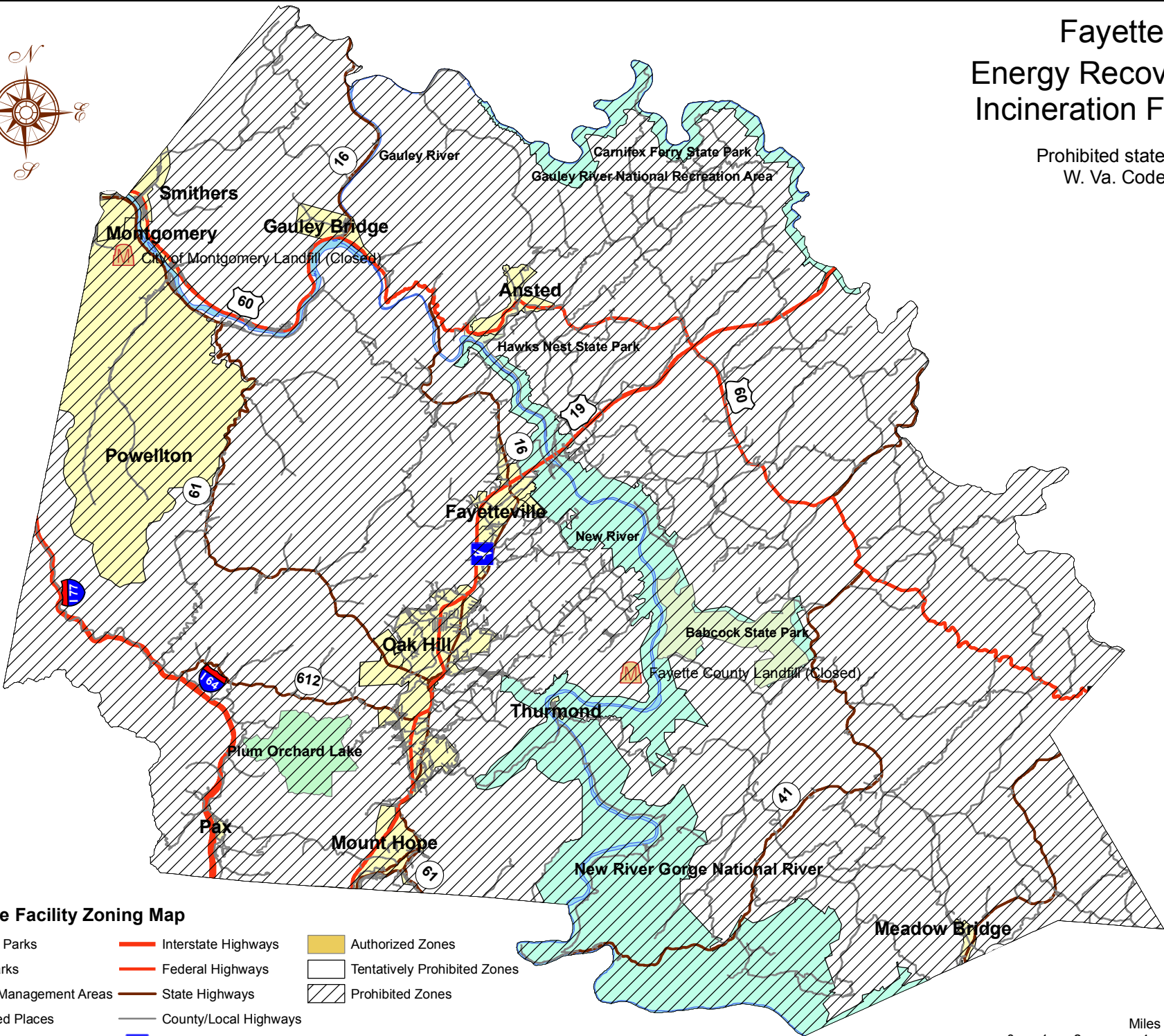
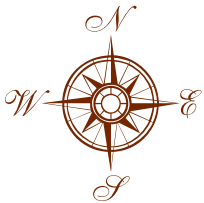


Fayette County Energy Recovery and Incineration Facilities

Prohibited state-wide as per
W. Va. Code § 22-15-19.



Solid Waste Facility Zoning Map

- | | | |
|--|---|--|
|  National Parks |  Interstate Highways |  Authorized Zones |
|  State Parks |  Federal Highways |  Tentatively Prohibited Zones |
|  Wildlife Management Areas |  State Highways |  Prohibited Zones |
|  Populated Places |  County/Local Highways | |
|  Major Rivers |  Fayette Airport | |

