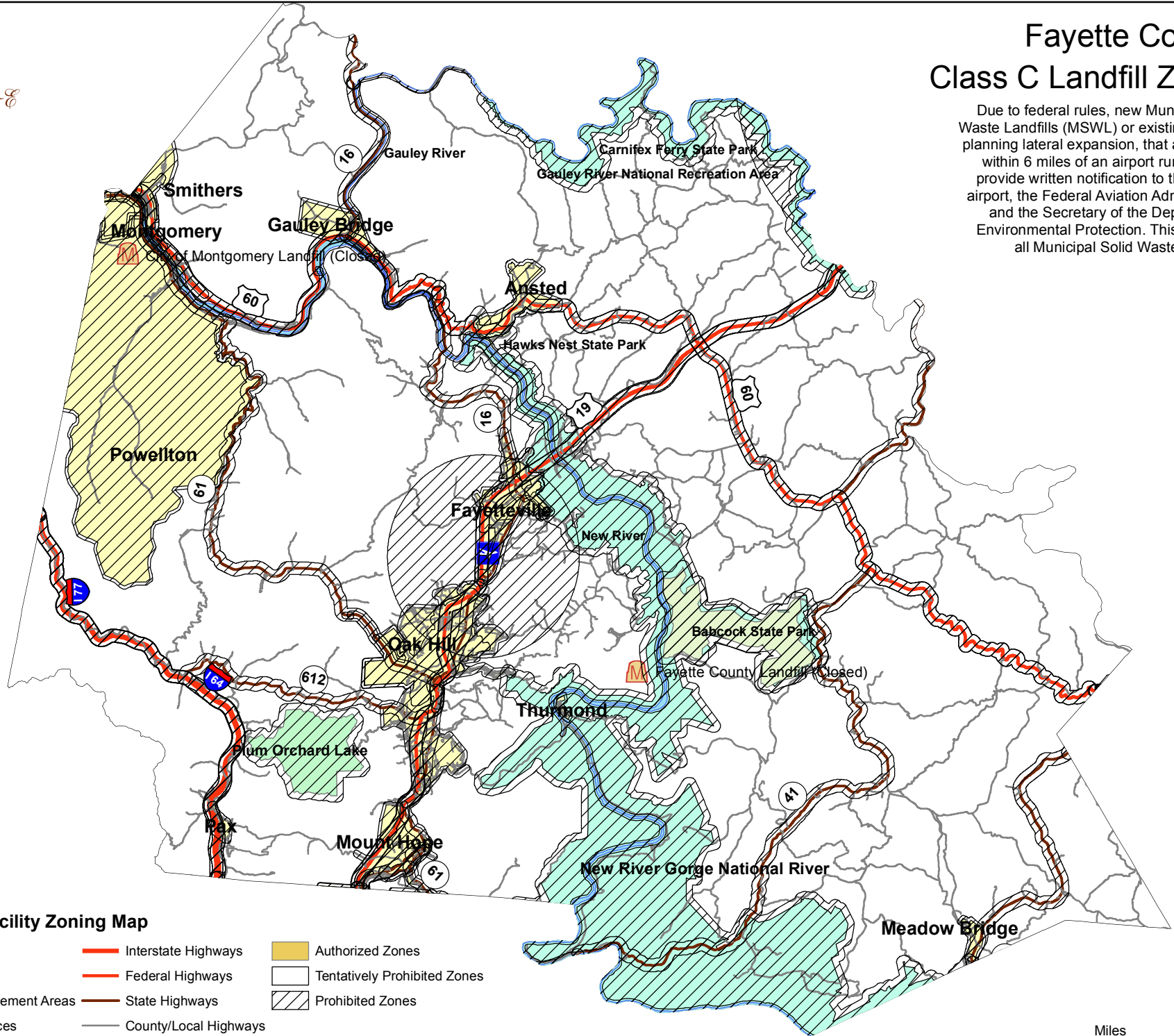
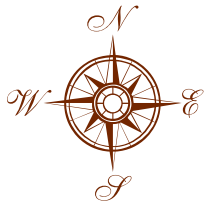


Fayette County Class C Landfill Zones

Due to federal rules, new Municipal Solid Waste Landfills (MSWL) or existing facilities planning lateral expansion, that are located within 6 miles of an airport runway, must provide written notification to the affected airport, the Federal Aviation Administration and the Secretary of the Department of Environmental Protection. This applies to all Municipal Solid Waste Landfills.



Solid Waste Facility Zoning Map

- | | | |
|---------------------------|-----------------------|------------------------------|
| National Parks | Interstate Highways | Authorized Zones |
| State Parks | Federal Highways | Tentatively Prohibited Zones |
| Wildlife Management Areas | State Highways | Prohibited Zones |
| Populated Places | County/Local Highways | |
| Major Rivers | Fayette Airport | |

